

## Glycerine gauges

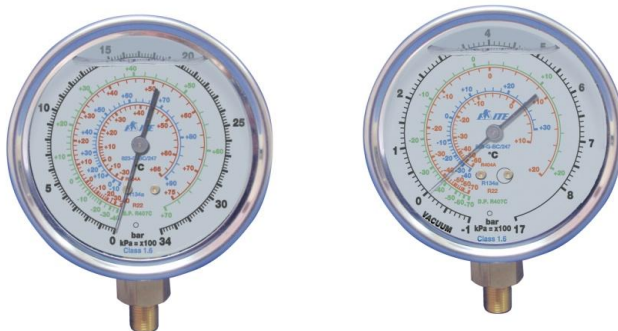
### PM-823-GC and PM-825-GC



Available scales:

- BC-247: R22, R134a, R404A, R407C scale in Bar/°C
- BC-447: R134a, R404A, R407C, R507 scale in Bar/°C
- BPC/410: R410A scale in Bar/PSI/°C

### 823-G and 825-G



Available scales:

- BC-247: R22, R134a, R404A, R407C scale in Bar/°C
- BC-447: R134a, R404A, R407C, R507 scale in Bar/°C
- BPC/410: R410A scale in Bar/PSI/°C
- BPC/410/127: R410A, R134a, R22, R407c scale in Bar/°C.

ITE presents his new series glycerine filled gauges which are either available in a panel mount execution with 1/4" SAE male flare back connection and front flange (PM-823-GC) or a standard manifold mount version with 1/8" NPT bottom connection (823-G).

#### Features and specifications:

- Dampening effect minimizes pulsations.
- Glycerine filling continuously lubricates gauge movement.
- Steadier, longer lasting mechanism.
- 80 mm scale diameter with +/- 1,6% accuracy.
- Stainless steel case.

Please contact ITE for more information.